



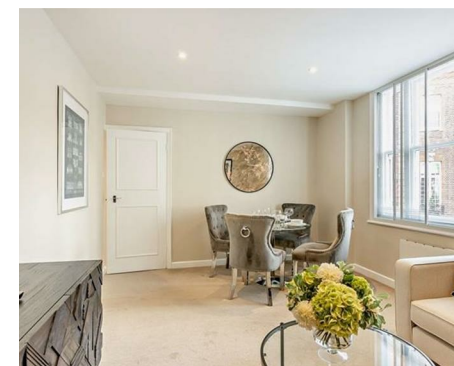
Let **UK** Home

1 Bedrooms

Flat

Located in London

£3,727 Per Month



info@letukhome.co.uk

<https://www.letukhome.co.uk/>

01795 358 886



39 Hill Street, Mayfair London

W1J 5NA



Let UK Home are excited to offer a stunning one bedroom apartment situated at No 39, Hill Street in the midst of Mayfair, one of London's most attractive 'villages'.

This bright spacious one bedroom second floor apartment is located on one of Mayfair's most prestigious roads neighbouring the famous Berkeley Square.

The apartment is set over 571sq ft. and offers a large double bedroom, modern fitted bathroom, spacious reception room with front facing views over Hill Street, modern fitted kitchen and benefits from ample storage space.

Hill Street, benefits from spacious living accommodation, lift service, on-site building manager, and is nestled conveniently between two of London's parks Hyde Park and Green Park. Residents also enjoy easy access to leafy Hyde Park.

Within walking distance are exquisite restaurants, pubs and bars as well as well-known hotels like The Dorchester, auction houses and a variety of members clubs.

The presence of prep schools a stone's throw from these Mayfair apartments ensures young children won't have far to travel while professionals needing to commute on a daily basis can do so without a hassle as Bond Street, Green Park and Marble Arch Tube stations are a short walk away.

39 Hill Street, Mayfair London

£3,727 Per Month



- 2nd Floor
- Close to local transport
- Video Entry | Pet Friendly
- Available furnished or unfurnished
- Digital TV

- Bright & spacious
- CCTV | Superfast Broadband
- Flexible rental terms
- Lifts & Porter
- EPC Rating: C





Let **UK** Home

3F 2 Eastbourne Terrace
 Paddington
 London
 W2 6LG

01795 358 886

info@letukhome.co.uk

Council Tax Band: F

Local Authority:

Agents Note: Whilst every care has been taken to prepare these particulars, they are for guidance purposes only. All measurements are approximate and are for general guidance purposes only and whilst every care has been taken to ensure their accuracy, they should not be relied upon and potential buyers/tenants are advised to recheck the measurements.

Energy Efficiency Rating		Current	Potential
Very energy efficient - lower running costs			
(92 plus) A			
(81-91) B			
(69-80) C			
(55-68) D		71	81
(39-54) E			
(21-38) F			
(1-20) G			
Not energy efficient - higher running costs			
England & Wales	EU Directive 2002/91/EC		

<https://www.letukhome.co.uk/>